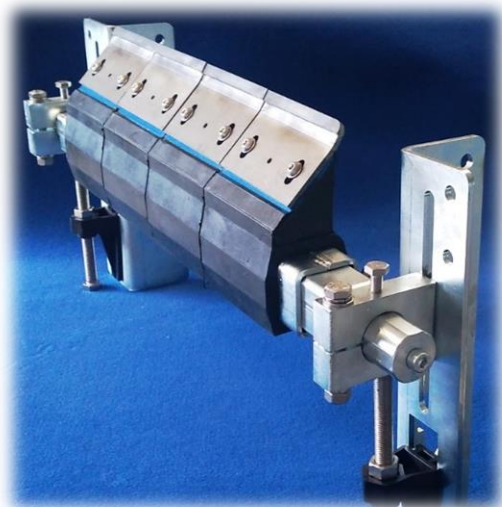
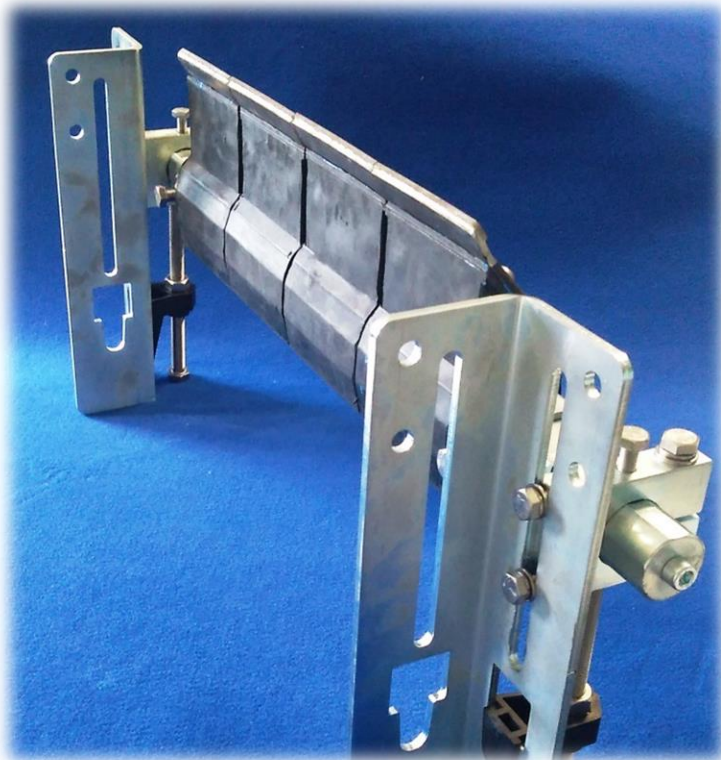


## Scraper NV type

Behind reversible scraper with segmented blade



### APPLICATIONS

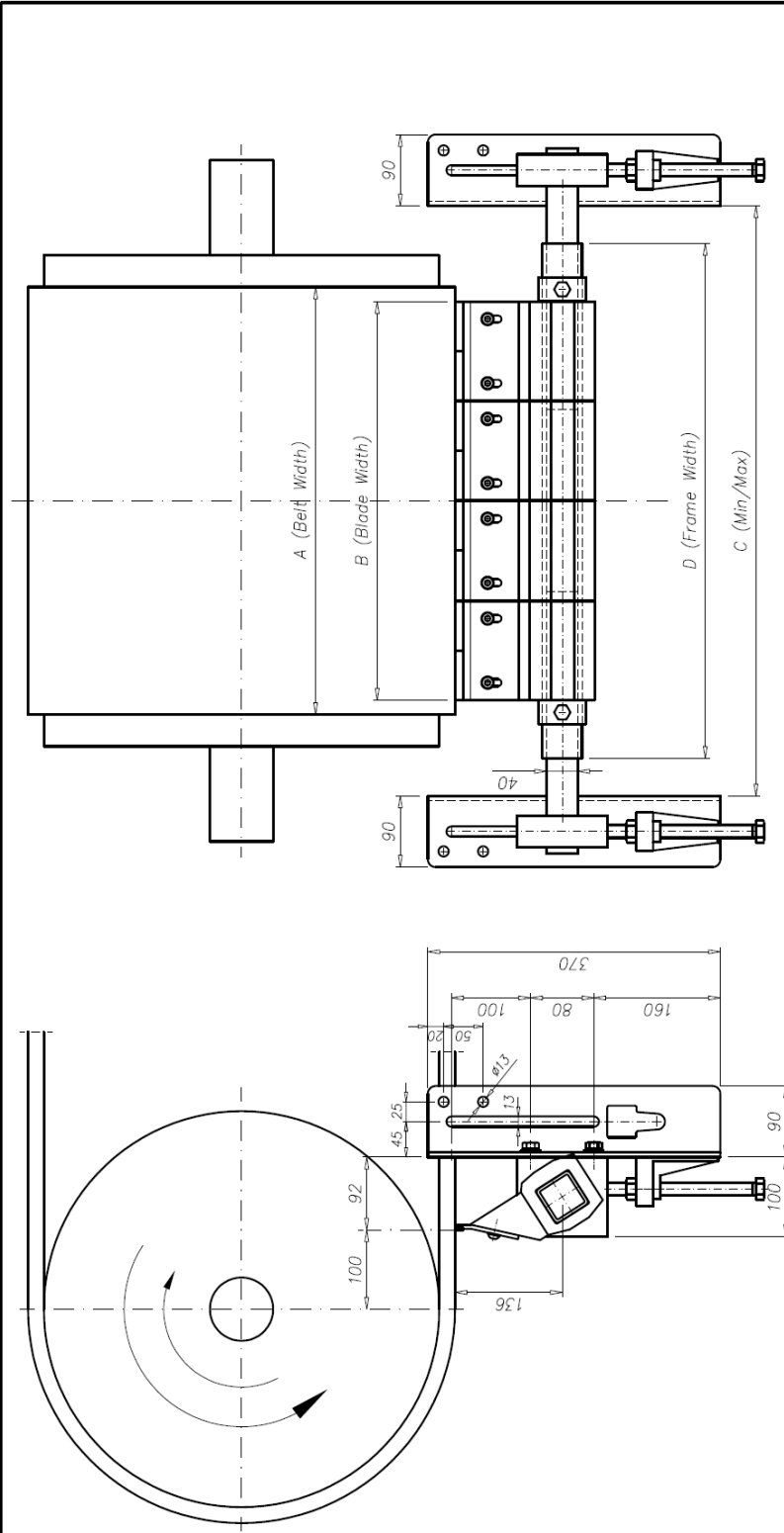
Suitable for scraping abrasive products.

Recommended (in combination with NFV) for scraping extremely packed and sticky products.

Also suitable for reversible conveyor belts.

### FEATURES

- Widia blades on damped rubber blocks.
- The constant pressure of the blades compensate the differences due to wear.
- Adjustable blades by means of fixing slots, getting even a slight curvature.
- Adjustable width for fixing to the frame of the conveyor belt.
- Adjustable tilt in order to obtain the best working angle.
- Adjustable working pressure by screws.
- Minimum maintenance.
- Quick change of blades without having to remove the scraper



Scraper type	A	B	C Min	C Max	D
NV400	400	378	440	730	500
NV500	500	504	590	880	650
NV650	650	630	740	1130	800
NV800	800	756	940	1350	1000
NV1000	1000	1008	1140	1850	1200
NV1200	1200	1133	1340	2050	1400
NV1400	1400	1385	1540	2250	1600

**VERDI S.p.A.**  
 Via A. Volta, 7/1 - 42024 Castelnuovo Di Sotto (RE)  
 Tel. 0522 683899 - Fax 0522 683086

**Assembly plan**  
**NV Scraper**

**NV scraper assembly**

- Place the scraper at the bottom of the slots of the support corners.
- Put the blades in contact with the belt.
- Fix the scraper to the conveyor frame by means of the supporting corners.
- Adjust the scraper pressure using the adjusting screws.
- The ideal scraping position of the blades during operation is 90°.
- Fix in position by tightening the fixing screws.