

ACCESSORI PER CATENE TIPO LH

LH chain Accessories

ATTACCHI ATS

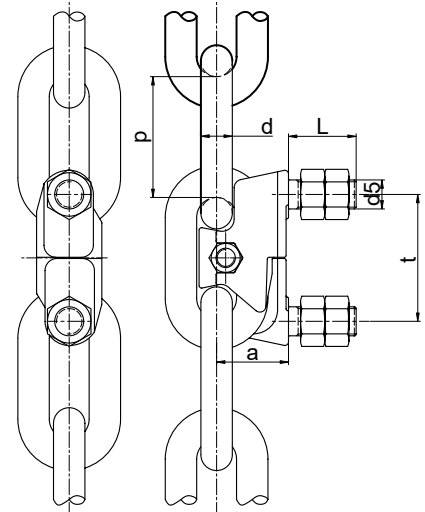
Attacchi speciali per tazze per catena tipo LH, per elevatori a ruote lisce o a ruote dentate, costruiti in acciaio bonificato.

ATS ATTACHMENTS

Special bucket attachments for LH chain, for smooth and toothed wheel elevators, made of quenched steel.

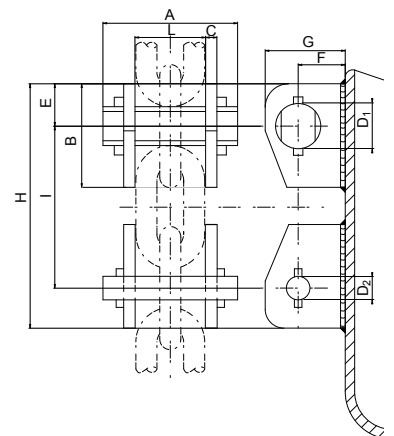
Attacchi ATS - ATS attachments

Codice Code	Catena Chain	Dimensioni Dimensions						Massa Mass
		t	p	d	a	L	d _s	
mm								kg ≅
ATS16	LH 16	63	64	16	37	40	M16	0.75
ATS19	LH 19	80	75	19	47	50	M20	1.3
ATS22	LH 22	91	86	22	52	55	M24	2.2
ATS26	LH 26	105	100	26	57	58	M24	2.6
ATS30	LH 30	126	120	30	71	65	M30	4.5
ATS34	LH 34	147	136	34	81	75	M36	7.1



Perni e staffe - Pins and sidewalls

Catena Chain	Codice Code		Dimensioni Dimensions											Massa del complesso Mass per set		
	Perni Pins	Staffe Sidewalls	mm												kg ≅	
	piatti (trascin) flat	tondi (guida) round	trascin. driving	guida guide	A	B	C	E	F	G	H	I	L	D ₁	D ₂	
16LH	PT16	PG16	ST16	SG16	110	80	10	31	40	65	190	128	58	32	18	1.85
19LH	PT19	PG19	ST19	SG19	131	95	12	40	45	75	230	150	68	36	21	3.4
22LH	PT22	PG22	ST22	SG22	158	110	15	44	50	85	260	172	80	42	25	4.7
26LH	PT26	PG26	ST26	SG26	172	120	15	45	61	100	290	200	94	48	32	6.7
30LH	PT30	PG30	ST30	SG30	190	140	15	50	75	125	340	240	109	60	36	10.2
34LH	PT34	PG34	ST34	SG34	210	155	18	54	80	130	380	272	122	67	40	13.4
38LH	PT38	PG38	ST38	SG38	240	170	18	60	90	145	408	288	136			18.5



ACCESSORI PER CATENE TIPO LH

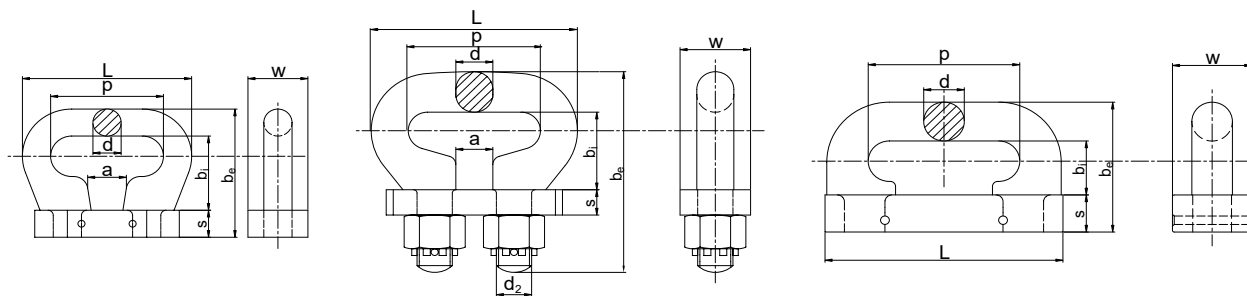
LH chain Accessories

GIUNTI GV / GN / GX

I giunti per catena LH sono costruiti in acciaio legato al NiCrMo. Sono caratterizzati da carichi di rottura superiori a quelli delle catene corrispondenti e da elevata resistenza a fatica grazie a speciali lavorazioni e trattamenti termici avanzati.

CHAIN COUPLINGS GV / GN / GX

LH chain couplings are made of NiCrMo alloy steel. Their breaking loads are higher than those of the corresponding chains and they are high fatigue stress resistant thanks to a special machining and to over-refined heat treatments.



Codice Code	Catena Chain	Dimensioni Dimensions									Massa del complesso Mass per set
		mm									
		p	d	L	w	b _i	b _e	s	a	d ₂	
GX14	LH14	50	14	80	30	37	67	15	24	-	0.45
GX16	LH16	64	16	98	34	44	77	16	18	-	0.75
GN19	LH19	75	21	115	50	46	118	15	22	M20	1.1
GN22	LH22	86	25	132	50	56	131	15	24	M20	1.9
GN26	LH26	100	30	153	50	64	157	20	29	M24	3.0
GN30	LH30	120	35	185	60	78	179	25	33	M30	5.2
GV16	LH16	64	17	98	34	23	56	16	-	-	0.9
GV19	LH19	75	20	118	40	27	65	18	-	-	1.4
GV22	LH22	86	23	150	45	31	76	22	-	-	1.65
GV26	LH26	100	27	161	50	38	91	26	-	-	2.55
GV30	LH30	120	32	192	60	46	108	30	-	-	4.3
GV34	LH34	136	36	214	70	49	117	32	-	-	6.25
GV38	LH38	144	40	224	80	56	130	34	-	-	8.1



GX



GN



GV

Denti per ruote - Teeth for wheels

Codice Code	Catena Chain	Dimensioni Dimensions									Massa del complesso Mass per set
		mm									
		A	B	C	d	D	E ⁽¹⁾	F	G ⁽¹⁾	H ⁽¹⁾	
D16	LH16	25	50	43	20	23	61.5	55	24	160	1.45
D19	LH19	28	55	50	20	25	75	55	24	175	1.8
D22	LH22	32	65	60	20	28	69	65	24	183	2.5
D26	LH26	32	78	70	24	32	81	65	26	201	3.3
D30	LH30	32	98	90	27	32	86	75	28	223	5.7
D34	LH34	34	107	100	-(2)	32 ⁽²⁾	94	80 ⁽²⁾	-(2)	174	6.7
D38	LH38	38	119	105	-(2)	32 ⁽²⁾	109	90 ⁽²⁾	-(2)	200	9.8

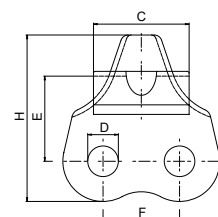
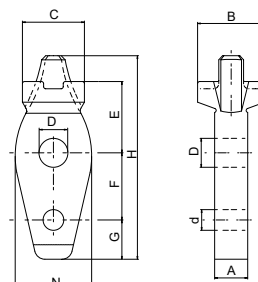


Fig. 1



(1) Misura variabile per denti maggiorati. - Variable size for oversized teeth.

(2) I denti D34 e D38 hanno la forma illustrata in figura 1 con due fori uguale diametro. - The shape of the D34 and D38 teeth are shown in figure 1, with two holes with the same diameter.