

# VERDI

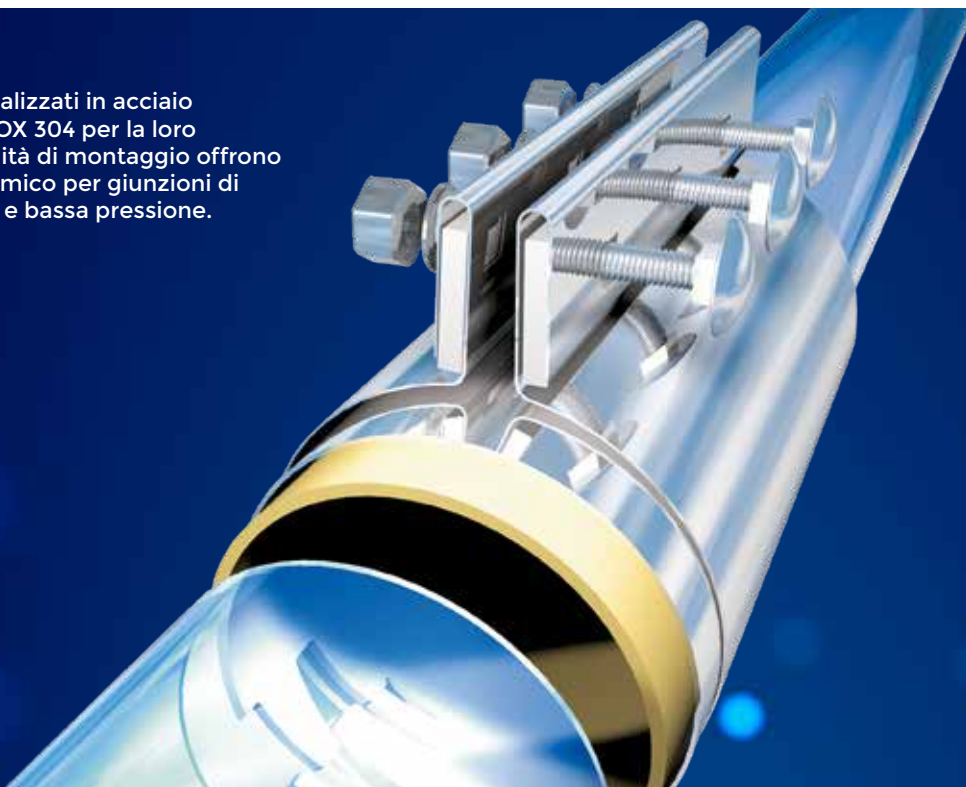
**Tecnologia del movimento**

**RACCORDI DI GIUNZIONE  
PER TRASPORTI  
PNEUMATICI**

*Couplings for Pneumatic Systems*



I raccordi Verdi realizzati in acciaio galvanizzato e INOX 304 per la loro semplicità e rapidità di montaggio offrono un sistema economico per giunzioni di tubazioni per alta e bassa pressione.



Verdi couplings, made of galvanised steel and 304 stainless steel, provide an economical solution for high and low pressure pipe connection thanks to their simplicity and fast assembly.

# GAMMA

## Range

P.4



**IL**

### **SERIE IL INOX**

Guarnizioni in gomma EPDM bianca FDA  
Bulloni M8

### **STAINLESS STEEL IL SERIES**

*EPDM FDA white rubber gaskets  
M8 bolts*

P.4



**SP**

### **SERIE SP INOX**

Guarnizioni in gomma EPDM bianca FDA  
Bulloni M12 e M16

### **STAINLESS STEEL SP SERIES**

*EPDM FDA white rubber gaskets  
M12 and M16 bolts*

P.5



**SL**

### **SERIE SL ZINCATI**

Guarnizioni in gomma EPDM bianca FDA  
Bulloni M12 e M16

### **GALVANIZED SL SERIES**

*EPDM FDA white rubber gaskets  
M12 and M16 bolts*

P.5



**SP**

### **SERIE SP ZINCATI**

Guarnizioni in gomma EPDM bianca FDA  
Bulloni M12 e M16

### **GALVANIZED SP SERIES**

*EPDM FDA white rubber gaskets  
M12 and M16 bolts*

# ACCESSORI

## Accessories

P.6



### **GUARNIZIONI IN GOMMA RUBBER GASKETS**

P.6



### **BULLONI BOLTS**

P.6



### **CRAVATTE COLLARS**

P.6



### **EXPRESS EXPRESS**

# RACCORDI IN ACCIAIO INOX

## Stainless steel couplings

### IL

#### SERIE

#### SERIES



### IP

#### SERIE

#### SERIES



### Serie IL

Raccordo in acciaio INOX

#### CARATTERISTICHE

- Fascia esterna INOX con flange in Nylon
- Fascia interna INOX
- Guarnizione in gomma EPDM bianca FDA
- Bulloni zincati (vite M8 + dado flangiato)
- Coppia di serraggio: 20 Nm
- Lamina INOX per conducibilità elettrica
- Massima pressione di lavoro: 2 bar
- Lunghezza: 100 / 150 mm
- Diametri: da 30 a 355,6 mm

### IL Series

Stainless steel coupling

#### FEATURES

- *Stainless steel outer shell with Nylon flanges*
- *Stainless steel inner shell*
- *EPDM FDA white rubber gasket*
- *Galvanized bolts (M8 screw + flanged nut)*
- *Tightening torque: 20 Nm*
- *Stainless steel conductivity strip*
- *Maximum working pressure: 2 bar*
- *Length: 100 / 150 mm*
- *Diameters: from 30 to 355,6 mm*

### Serie IP

Raccordo in acciaio INOX

#### CARATTERISTICHE

- Fascia esterna INOX con flange in alluminio 35x8 mm
- Fascia interna INOX con dentatura di precisione
- Guarnizione in gomma EPDM bianca FDA
- Bulloni zincati (vite M12 Ø<76,1 e M16 Ø≥76,1 + dado) (rondella su richiesta)
- Coppia di serraggio Nm: M12=50 M16=120
- Lamina INOX per conducibilità elettrica
- Massima pressione di lavoro: 6 bar
- Lunghezza: 100 / 150 / 200 / 250 / 300 mm
- Diametri: da 30 a 355,6 mm

### IP Series

Stainless steel coupling

#### FEATURES

- *Stainless steel outer shell with aluminum flanges 35x8 mm*
- *Stainless steel inner shell with precision meshing teeth*
- *EPDM FDA white rubber gasket*
- *Galvanized bolts (M12 screw Ø<76,1 and M16 Ø≥76,1 + nut) (washer on request)*
- *Tightening torque Nm: M12=50 M16=120*
- *Stainless steel conductivity strip*
- *Maximum working pressure: 6 bar*
- *Length: 100 / 150 / 200 / 250 / 300 mm*
- *Diameters: from 30 to 355,6 mm*

# RACCORDI IN ACCIAIO ZINCATO

## Galvanized couplings

### SL

SERIE  
SERIES



### SP

SERIE  
SERIES



### Serie SL

Raccordo in acciaio zincato

#### CARATTERISTICHE

- Fascia esterna in acciaio zincato con flange zincate 35x4 mm
- Fascia interna in acciaio zincato con dentatura di precisione
- Guarnizione in gomma EPDM bianca FDA
- Bulloni zincati (vite M12 Ø<76,1 e M16 Ø≥76,1 + dado) (rondella su richiesta)
- Coppia di serraggio Nm: M12=50 M16=120
- Lamina INOX per conducibilità elettrica
- Massima pressione di lavoro: 6 bar
- Lunghezza: 100 / 150 / 200 / 250 / 300 mm
- Diametri: da 30 a 355,6 mm

### SL series

Galvanized coupling

#### FEATURES

- Galvanized outer shell with galvanized flanges 35x4 mm
- Galvanized inner shell with precision meshing teeth
- EPDM FDA white rubber gasket
- Galvanized bolts (M12 screw Ø<76,1 and M16 Ø≥76,1 + nut) (washer on request)
- Tightening torque Nm: M12=50 M16=120
- Stainless steel conductivity strip
- Maximum working pressure: 6 bar
- Length: 100 / 150 / 200 / 250 / 300 mm
- Diameters: from 30 to 355,6 mm

### Serie SP

Raccordo in acciaio zincato

#### CARATTERISTICHE

- Fascia esterna in acciaio zincato con flange in alluminio 35x8 mm
- Fascia interna in acciaio zincato con dentatura di precisione
- Guarnizione in gomma EPDM bianca FDA
- Bulloni zincati (vite M12 Ø<76,1 e M16 Ø≥76,1 + dado) (rondella su richiesta)
- Coppia di serraggio Nm: M12=50 M16=120
- Lamina INOX per conducibilità elettrica
- Massima pressione di lavoro: 6 bar
- Lunghezza: 100 / 150 / 200 / 250 / 300 mm
- Diametri: da 30 a 355,6 mm

### SP series

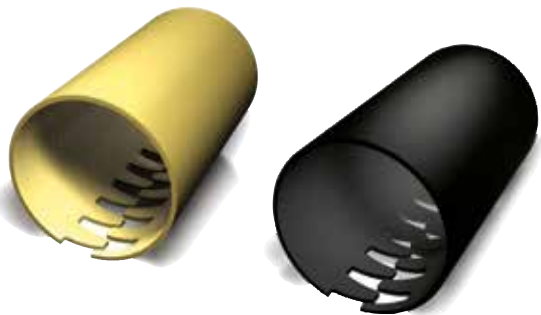
Galvanized coupling

#### FEATURES

- Galvanized outer shell with aluminum flanges 35x8 mm
- Galvanized inner shell with precision meshing teeth
- EPDM FDA white rubber gasket
- Galvanized bolts (M12 screw Ø<76,1 and M16 Ø≥76,1 + nut) (washer on request)
- Tightening torque Nm: M12=50 M16=120
- Stainless steel conductivity strip
- Maximum working pressure: 6 bar
- Length: 100 / 150 / 200 / 250 / 300 mm
- Diameters: from 30 to 355,6 mm

### Guarnizioni in gomma

#### Rubber gaskets



- Guarnizione in gomma EPDM bianca FDA Temperature di esercizio: da -25°C a +100°C
- Guarnizione in gomma EPDM nera Temperature di esercizio: da -30°C a +100°C

Altri tipi di guarnizioni in gomma su richiesta

- *White EPDM FDA rubber gasket Operating Temperature: from -25°C to +100°C*
- *Black EPDM rubber gasket Operating Temperature: from -30°C to +100°C*

*Other rubber gaskets available on request*

### BULLONI - Coppie di serraggio

#### BOLTS - Tightening torques



- M8: zincati = 20Nm  
INOX = 5Nm
- M12: zincati = 50Nm  
INOX = 40Nm
- M16: zincati = 120Nm  
INOX = 40Nm

Bulloni INOX solo su richiesta  
M16 INOX con inserto in Nylon

- *M8: galvanized = 20Nm  
INOX = 5Nm*
- *M12: galvanized = 50Nm  
INOX = 40Nm*
- *M16: galvanized = 120Nm  
INOX = 40Nm*

*INOX bolts only on request  
M16 INOX with Nylon insert*

### Express

#### Express



- Serraggio rapido in acciaio zincato
- Bulloni zincati (vite M12 Ø<76,1 e M16 Ø≥76,1 + dado)
- Per raccordi di lunghezza: 100 / 150 mm

- *Galvanized quick clamping system*
- *Galvanized bolts (M12 screw Ø<76,1 and M16 Ø≥76,1 + nut)*
- *For coupling length: 100 / 150 mm*

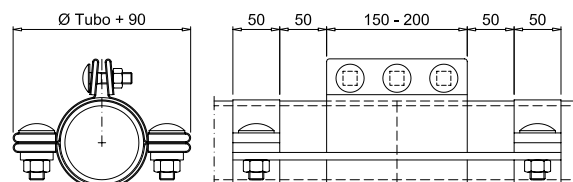
### Cravatte

#### Collars



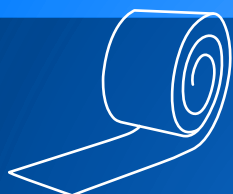
- Collari di bloccaggio zincati o INOX
- Tiranti zincati o INOX
- Bulloni zincati (vite M16 + dado)
- Per raccordi di lunghezza: 150 / 200 mm

- *Galvanized or INOX clamping collars*
- *Galvanized or INOX tie-beam*
- *Galvanized bolts (M16 screw + nut)*
- *For coupling length: 150 / 200 mm*



ø mm	ZL (Kg)					ZP / IP (Kg)					IL (Kg)	
	H100	H150	H200	H250	H300	H100	H150	H200	H250	H300	H100	H150
30	0.70	1.05	1.40	1.75	2.10	0.66	0.99	1.33	1.66	1.99	0.26	0.39
33.7	0.73	1.09	1.46	1.82	2.19	0.69	1.04	1.38	1.73	2.07	0.28	0.41
38.1	0.76	1.14	1.52	1.90	2.29	0.72	1.08	1.45	1.81	2.17	0.29	0.44
40	0.78	1.16	1.55	1.94	2.33	0.74	1.11	1.47	1.84	2.21	0.30	0.45
42.4	0.79	1.19	1.59	1.98	2.38	0.76	1.13	1.51	1.89	2.27	0.31	0.46
45	0.81	1.22	1.63	2.03	2.44	0.77	1.16	1.55	1.94	2.32	0.32	0.47
48.3	0.84	1.26	1.68	2.09	2.51	0.80	1.20	1.60	2.00	2.40	0.33	0.49
50	0.85	1.28	1.70	2.13	2.55	0.81	1.22	1.62	2.03	2.44	0.33	0.50
53	0.87	1.31	1.75	2.18	2.62	0.83	1.25	1.67	2.09	2.50	0.34	0.51
54	0.88	1.32	1.76	2.20	2.64	0.84	1.26	1.68	2.10	2.52	0.35	0.52
55	0.89	1.33	1.78	2.22	2.66	0.85	1.27	1.70	2.12	2.55	0.35	0.53
57	0.90	1.35	1.80	2.26	2.71	0.86	1.30	1.73	2.16	2.59	0.36	0.54
58	0.91	1.36	1.82	2.27	2.73	0.87	1.31	1.74	2.18	2.61	0.36	0.54
60.3	0.93	1.39	1.85	2.32	2.78	0.89	1.33	1.78	2.22	2.67	0.37	0.55
63.5	0.95	1.43	1.90	2.38	2.85	0.91	1.37	1.82	2.28	2.74	0.38	0.57
65	0.96	1.44	1.92	2.41	2.89	0.92	1.39	1.85	2.31	2.77	0.39	0.58
66	0.97	1.45	1.94	2.42	2.91	0.93	1.40	1.86	2.33	2.79	0.39	0.58
68	0.98	1.48	1.97	2.46	2.95	0.95	1.42	1.89	2.36	2.84	0.40	0.59
69	0.99	1.49	1.98	2.48	2.98	0.95	1.43	1.91	2.38	2.86	0.40	0.60
70	1.00	1.50	2.00	2.50	3.00	0.96	1.44	1.92	2.40	2.88	0.40	0.60
72	1.01	1.52	2.03	2.54	3.04	0.98	1.46	1.95	2.44	2.93	0.41	0.62
73	1.02	1.53	2.04	2.55	3.06	0.98	1.47	1.97	2.46	2.95	0.41	0.62
75	1.04	1.55	2.07	2.59	3.11	1.00	1.50	2.00	2.50	2.99	0.42	0.63
76.1	1.21	1.81	2.41	3.01	3.62	1.17	1.75	2.33	2.92	3.50	0.42	0.64
79	1.23	1.84	2.46	3.07	3.68	1.19	1.78	2.38	2.97	3.57	0.44	0.65
80	1.23	1.85	2.47	3.09	3.70	1.20	1.79	2.39	2.99	3.59	0.44	0.66
83	1.26	1.89	2.51	3.14	3.77	1.22	1.83	2.44	3.05	3.66	0.45	0.67
84	1.26	1.90	2.53	3.16	3.79	1.23	1.84	2.45	3.07	3.68	0.45	0.68
85	1.27	1.91	2.54	3.18	3.82	1.23	1.85	2.47	3.08	3.70	0.46	0.68
88.9	1.30	1.95	2.60	3.25	3.90	1.26	1.89	2.53	3.16	3.79	0.47	0.70
90	1.31	1.96	2.62	3.27	3.93	1.27	1.91	2.54	3.18	3.81	0.47	0.71
94	1.34	2.01	2.68	3.35	4.02	1.30	1.95	2.60	3.25	3.90	0.49	0.73
95	1.35	2.02	2.69	3.37	4.04	1.31	1.96	2.62	3.27	3.92	0.49	0.74
99	1.38	2.06	2.75	3.44	4.13	1.34	2.01	2.68	3.34	4.01	0.51	0.76
100	1.38	2.08	2.77	3.46	4.15	1.35	2.02	2.69	3.36	4.04	0.51	0.76
101.6	1.40	2.09	2.79	3.49	4.19	1.36	2.04	2.71	3.39	4.07	0.51	0.77
104	1.41	2.12	2.83	3.53	4.24	1.38	2.06	2.75	3.44	4.13	0.52	0.78
105	1.42	2.13	2.84	3.55	4.26	1.38	2.07	2.77	3.46	4.15	0.53	0.79
108	1.44	2.17	2.89	3.61	4.33	1.41	2.11	2.81	3.51	4.22	0.54	0.81
113	1.48	2.22	2.96	3.70	4.44	1.44	2.16	2.88	3.61	4.33	0.56	0.83
114.3	1.49	2.24	2.98	3.73	4.47	1.45	2.18	2.90	3.63	4.36	0.56	0.84
120.6	1.54	2.31	3.07	3.84	4.61	1.50	2.25	3.00	3.75	4.50	0.58	0.87
121	1.54	2.31	3.08	3.85	4.62	1.50	2.25	3.00	3.75	4.51	0.58	0.87
125	1.57	2.36	3.14	3.93	4.71	1.53	2.30	3.06	3.83	4.59	0.60	0.90
127	1.59	2.38	3.17	3.96	4.76	1.55	2.32	3.09	3.87	4.64	0.60	0.91
129	1.60	2.40	3.20	4.00	4.80	1.56	2.34	3.12	3.90	4.68	0.61	0.92
133	1.63	2.44	3.26	4.07	4.89	1.59	2.39	3.18	3.98	4.77	0.63	0.94
139.7	1.68	2.52	3.36	4.20	5.04	1.64	2.46	3.28	4.10	4.92	0.65	0.97
141.3	1.69	2.54	3.38	4.23	5.07	1.65	2.48	3.31	4.13	4.96	0.65	0.98
143	1.70	2.56	3.41	4.26	5.11	1.67	2.50	3.33	4.16	5.00	0.66	0.99
145	1.72	2.58	3.44	4.30	5.16	1.68	2.52	3.36	4.20	5.04	0.67	1.00
146	1.73	2.59	3.45	4.32	5.18	1.69	2.53	3.38	4.22	5.06	0.67	1.01
150	1.76	2.63	3.51	4.39	5.27	1.72	2.58	3.44	4.29	5.15	0.69	1.03
152.4	1.77	2.66	3.55	4.44	5.32	1.74	2.60	3.47	4.34	5.21	0.69	1.04
154	1.79	2.68	3.57	4.47	5.36	1.75	2.62	3.50	4.37	5.24	0.70	1.05
155	1.79	2.69	3.59	4.48	5.38	1.76	2.63	3.51	4.39	5.27	0.70	1.05
156	1.80	2.70	3.60	4.50	5.40	1.76	2.64	3.53	4.41	5.29	0.71	1.06
158.8	1.82	2.73	3.64	4.55	5.47	1.78	2.68	3.57	4.46	5.35	0.72	1.08
160	1.83	2.75	3.66	4.58	5.49	1.79	2.69	3.58	4.48	5.38	0.72	1.08
165	1.87	2.80	3.74	4.67	5.60	1.83	2.74	3.66	4.57	5.49	0.74	1.11
168.3	1.89	2.84	3.79	4.73	5.68	1.85	2.78	3.71	4.64	5.56	0.75	1.13
170	1.91	2.86	3.81	4.76	5.72	1.87	2.80	3.73	4.67	5.60	0.76	1.13
175	1.94	2.91	3.89	4.86	5.83	1.90	2.86	3.81	4.76	5.71	0.77	1.16
177.8	1.96	2.95	3.93	4.91	5.89	1.92	2.89	3.85	4.81	5.77	0.78	1.18
180	1.98	2.97	3.96	4.95	5.94	1.94	2.91	3.88	4.85	5.82	0.79	1.19
186	2.02	3.04	4.05	5.06	6.07	1.99	2.98	3.97	4.96	5.96	0.81	1.22
192	2.07	3.10	4.14	5.17	6.21	2.03	3.05	4.06	5.08	6.09	0.83	1.25
193.7	2.08	3.12	4.16	5.20	6.25	2.04	3.06	4.09	5.11	6.13	0.84	1.26
200	2.13	3.19	4.26	5.32	6.39	2.09	3.14	4.18	5.23	6.27	0.86	1.29
203.2	2.15	3.23	4.31	5.38	6.46	2.11	3.17	4.23	5.29	6.34	0.87	1.31
205	2.17	3.25	4.33	5.41	6.50	2.13	3.19	4.25	5.32	6.38	0.88	1.32
206	2.17	3.26	4.35	5.43	6.52	2.13	3.20	4.27	5.34	6.40	0.88	1.32
210	2.20	3.30	4.41	5.51	6.61	2.16	3.25	4.33	5.41	6.49	0.90	1.35
210.9	2.21	3.31	4.42	5.52	6.63	2.17	3.26	4.34	5.43	6.51	0.90	1.35
216	2.25	3.37	4.50	5.62	6.74	2.21	3.31	4.42	5.52	6.63	0.92	1.38
219.1	2.27	3.41	4.54	5.68	6.81	2.23	3.35	4.46	5.58	6.70	0.93	1.39
220	2.28	3.42	4.56	5.69	6.83	2.24	3.36	4.48	5.60	6.72	0.93	1.40
245	2.46	3.70	4.93	6.16	7.39	2.43	3.64	4.85	6.06	7.28	1.02	1.53
250	2.50	3.75	5.00	6.25	7.50	2.46	3.69	4.93	6.16	7.39	1.04	1.56
254	2.53	3.80	5.06	6.33	7.59	2.49	3.74	4.98	6.23	7.48	1.05	1.58
273	2.67	4.01	5.34	6.68	8.02	2.63	3.95	5.27	6.58	7.90	1.12	1.68
295	2.84	4.25	5.67	7.09	8.51	2.80	4.20	5.60	6.99	8.39	1.20	1.80
300	2.87	4.31	5.75	7.18	8.62	2.84	4.25	5.67	7.09	8.51	1.22	1.82
304	2.90	4.35	5.81	7.26	8.71	2.86	4.30	5.73	7.16	8.59	1.23	1.84
324	3.05	4.58	6.10	7.63	9.16	3.01	4.52	6.03	7.53	9.04	1.30	1.95
350	3.25	4.87	6.49	8.11	9.74	3.21	4.81	6.41	8.02	9.62	1.39	2.09
355.6	3.29	4.93	6.58	8.22	9.86	3.25	4.87	6.50	8.12	9.75	1.41	2.12

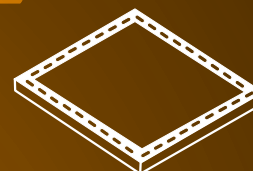
# Tecnologia del movimento



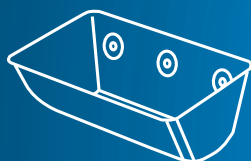
**NASTRI PER ELEVATORI**



**RACCORDI**



**PANNELLI ANTISCOPPIO**



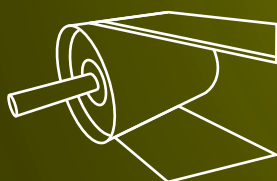
**TAZZE**



**CATENE PER ELEVATORI**



**CATENE RASCHIANTI**



**NASTRI TRASPORTATORI**



**ATEX**



**SEPARATORI MAGNETICI**



**Verdi S.p.A - Headquarter**

Via A. Volta 7/1

42024 Castelnovo di Sotto (RE)

Tel +39 0522 683899 - Fax +39 0522 683086

info@verdispa.com

**Verdi S.p.A - Torino**

Corso Marconi, 15

10125 Torino

Tel. +39 011 658274

verdi.torino@verdispa.com

[www.verdispa.com](http://www.verdispa.com)

