

RUOTE DENTATE E LISCE

Sprockets and trailers

RUOTE DI COMANDO PER CATENE FORGIATE / FORGED CHAINS DRIVE WHEELS



Ruote di comando **STANDARD**
in esecuzione **asimmetrica**

STANDARD drive wheels
asymmetrical execution



Ruote di comando **SPECIALI**
in esecuzione **simmetrica**

SPECIAL drive wheels
symmetrical execution

RUOTE DI RINVIO PER CATENE FORGIATE / FORGED CHAINS RETURN WHEELS



Ruote di rinvio dentate tipo **STANDARD**

STANDARD Trailers



Ruote di rinvio lisce

Smooth Trailers

Tabella per il calcolo del
Diametro primitivo (Dp)
valida per tutti i tipi di ruote
Pitch diameter (Dp)
calculation table.
Suitable for all wheels

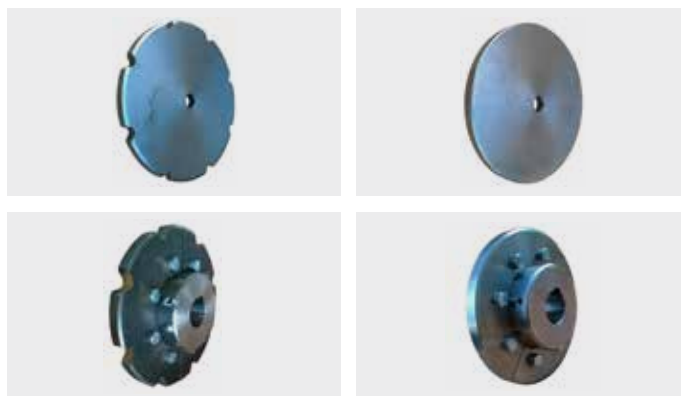
$Dp = K \times P$
P = passo
Z = Nr. denti



$Dp = K \times P$
P = pitch
Z = Teeth Nr.

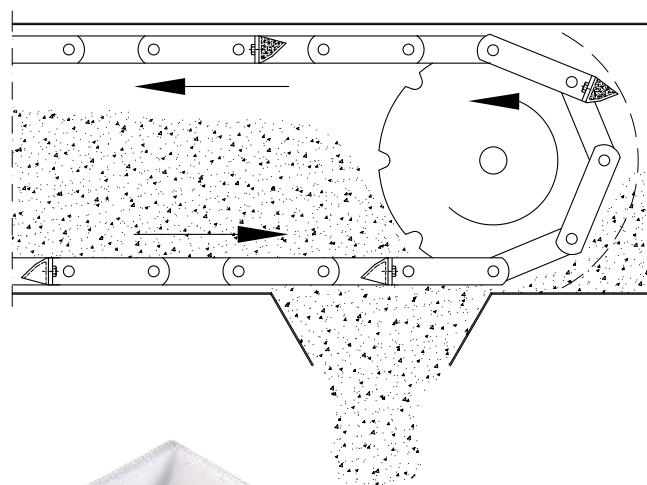
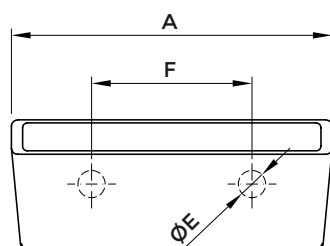
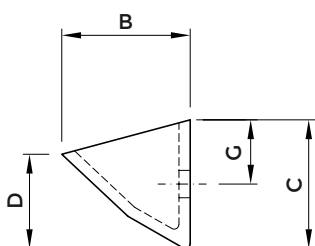
Z	K
6	2,000
7	2,305
8	2,613
9	2,924
10	3,236
11	3,549
12	3,864
13	4,179
14	4,494
15	4,810
16	5,126
17	5,442
18	5,759
19	6,076
20	6,393

RUOTE PER CATENE RASCHIANTI DIN 8167 E DIN 8165 / WHEELS FOR SCRAPER CHAINS DIN 8167 E DIN 8165



TAZZE PULITRICI PER REDLER

HDP cleaner buckets for redler



Tazza Bucket	A	B	C	D	N° fori Holes N°	E	F	G
	mm	mm	mm	mm	*	Ø mm	mm	mm
TZ 40	100	40	40	29	2	8,5	50	20
TZ 50	100	45	50	38	2	8,5	50	25
TZ 60	100	50	60	47	2	8,5	50	30

* Forature speciali su richiesta

* Special holes available on request